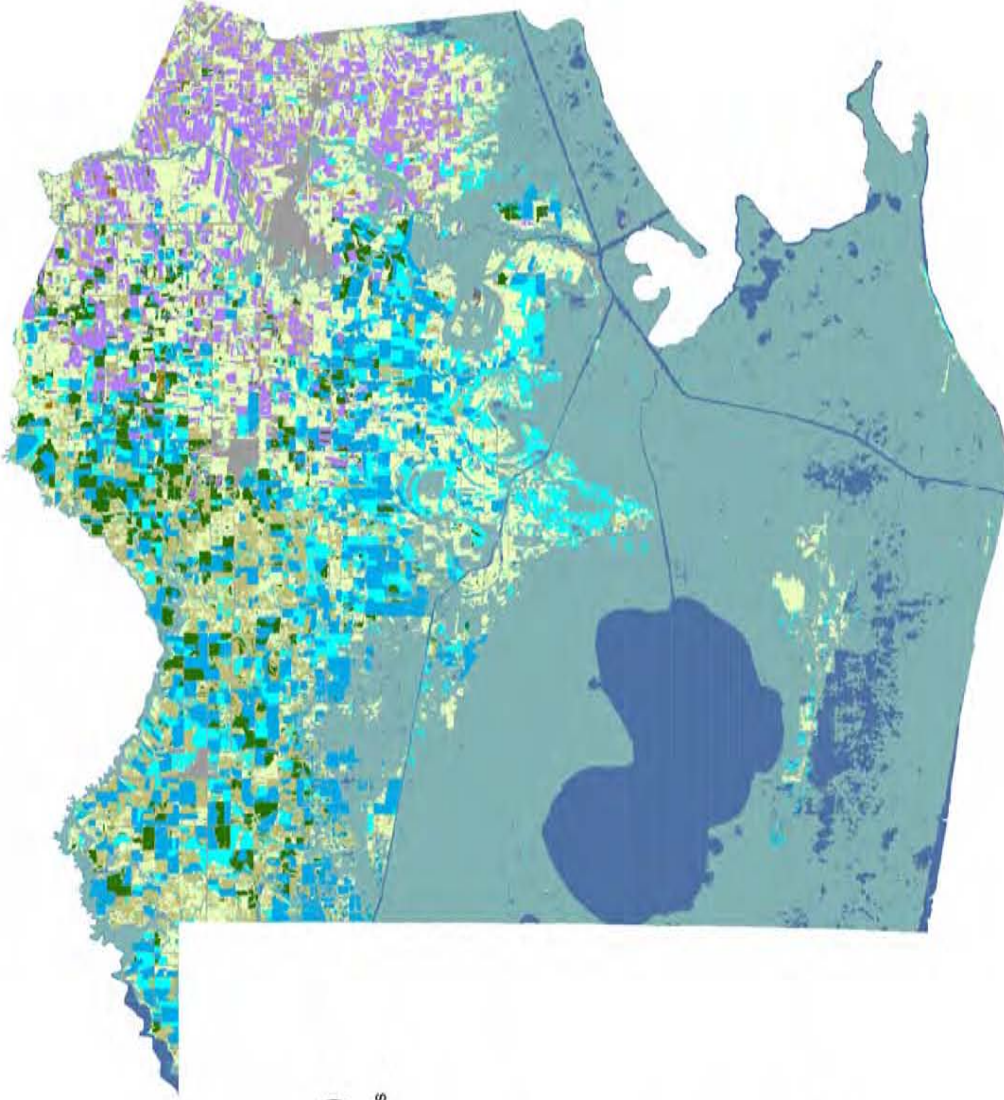




Current Data Maps

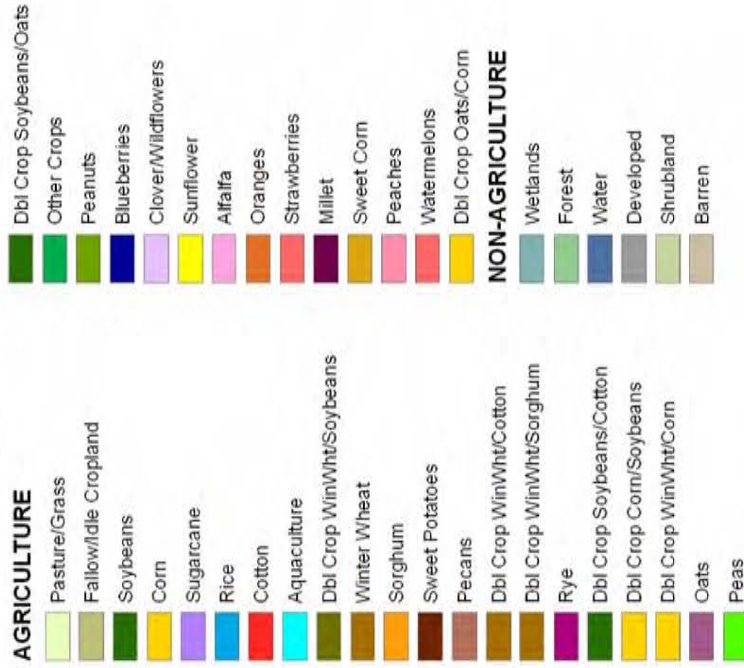
Vermilion Parish

2011 Agricultural Land Cover



2011 Louisiana

Land Cover Categories (by decreasing acreage)

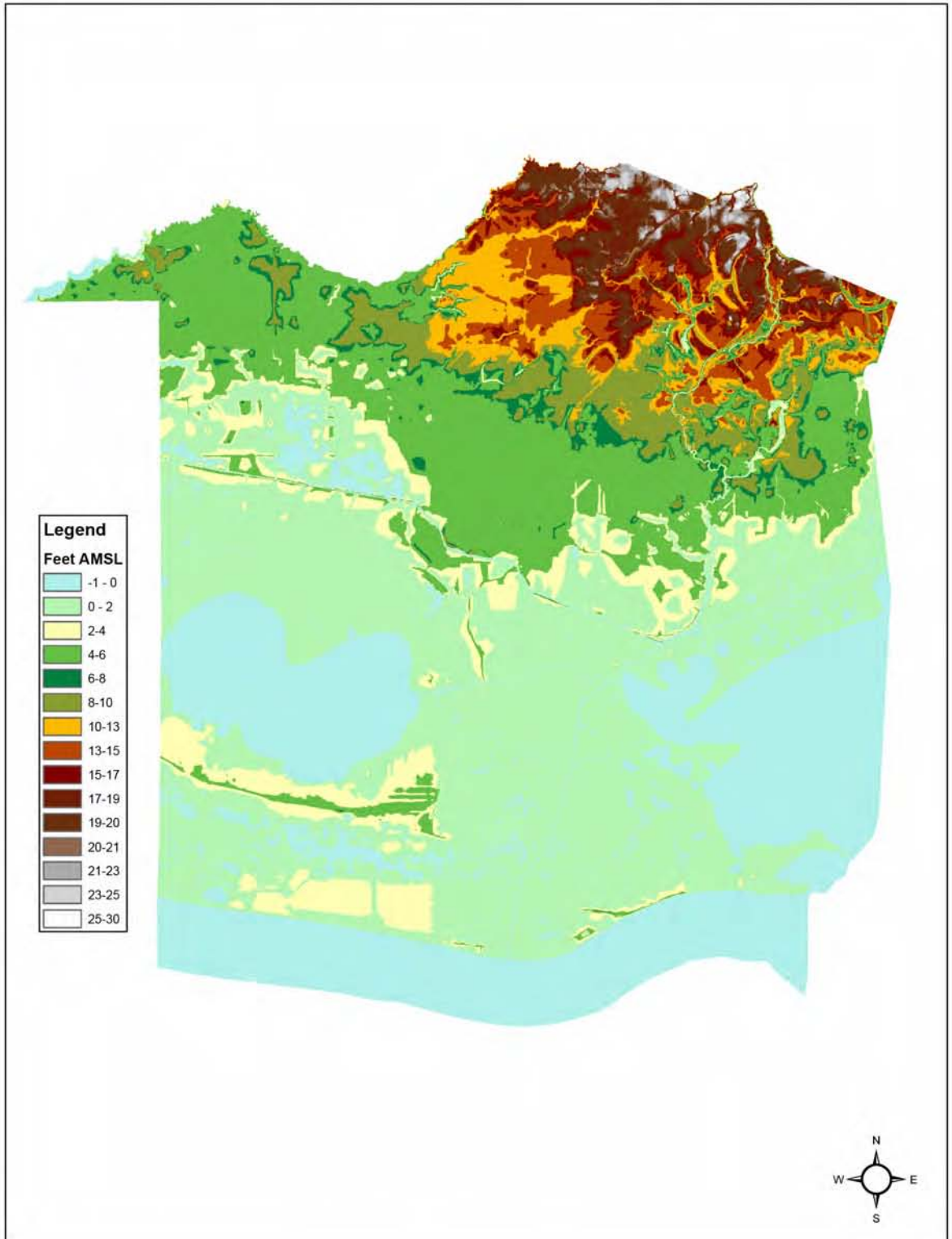


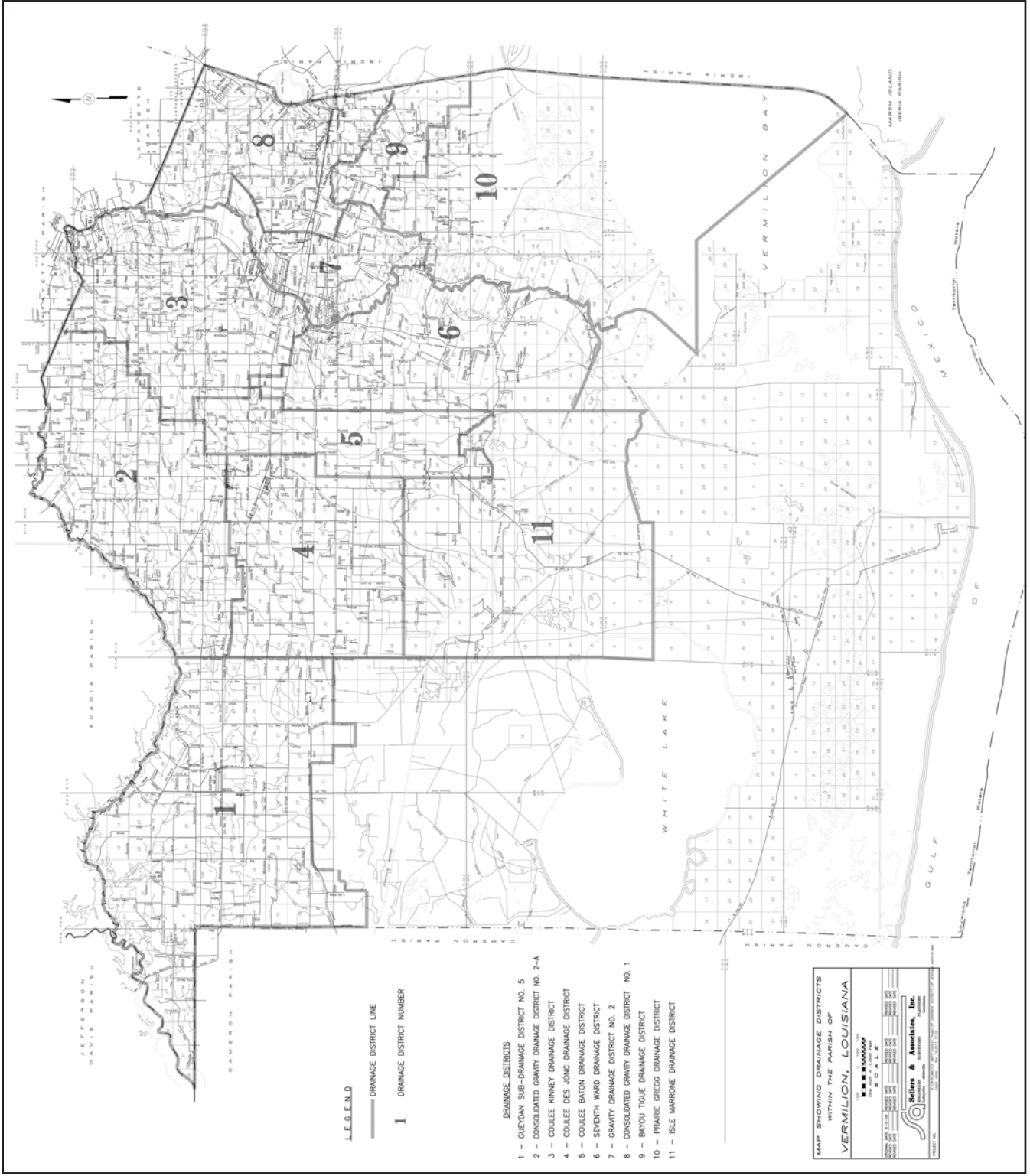
1 inch = 10,000 feet



Vermilion Parish

USGS/LDEQ Digital Elevation Model





LEGEND

— DRAINAGE DISTRICT LINE

1 DRAINAGE DISTRICT NUMBER

- DRAINAGE DISTRICTS**
- 1 - QUEYDAN SUB-DRAINAGE DISTRICT NO. 5
 - 2 - CONSOLIDATED GRAVITY DRAINAGE DISTRICT NO. 2-A
 - 3 - COULLEE KINNEY DRAINAGE DISTRICT
 - 4 - COULLEE DES JONC DRAINAGE DISTRICT
 - 5 - COULLEE BATON DRAINAGE DISTRICT
 - 6 - SEVENTH WARD DRAINAGE DISTRICT
 - 7 - GRAVITY DRAINAGE DISTRICT NO. 2
 - 8 - CONSOLIDATED GRAVITY DRAINAGE DISTRICT NO. 1
 - 9 - BAYOU TOUJE DRAINAGE DISTRICT
 - 10 - PRAIRIE GREGG DRAINAGE DISTRICT
 - 11 - ISLE MARRONE DRAINAGE DISTRICT

**MAP SHOWING DRAINAGE DISTRICTS
WITHIN THE PARISH OF
VERMILION, LOUISIANA**

SCALE: AS SHOWN

DATE: 10/15/10

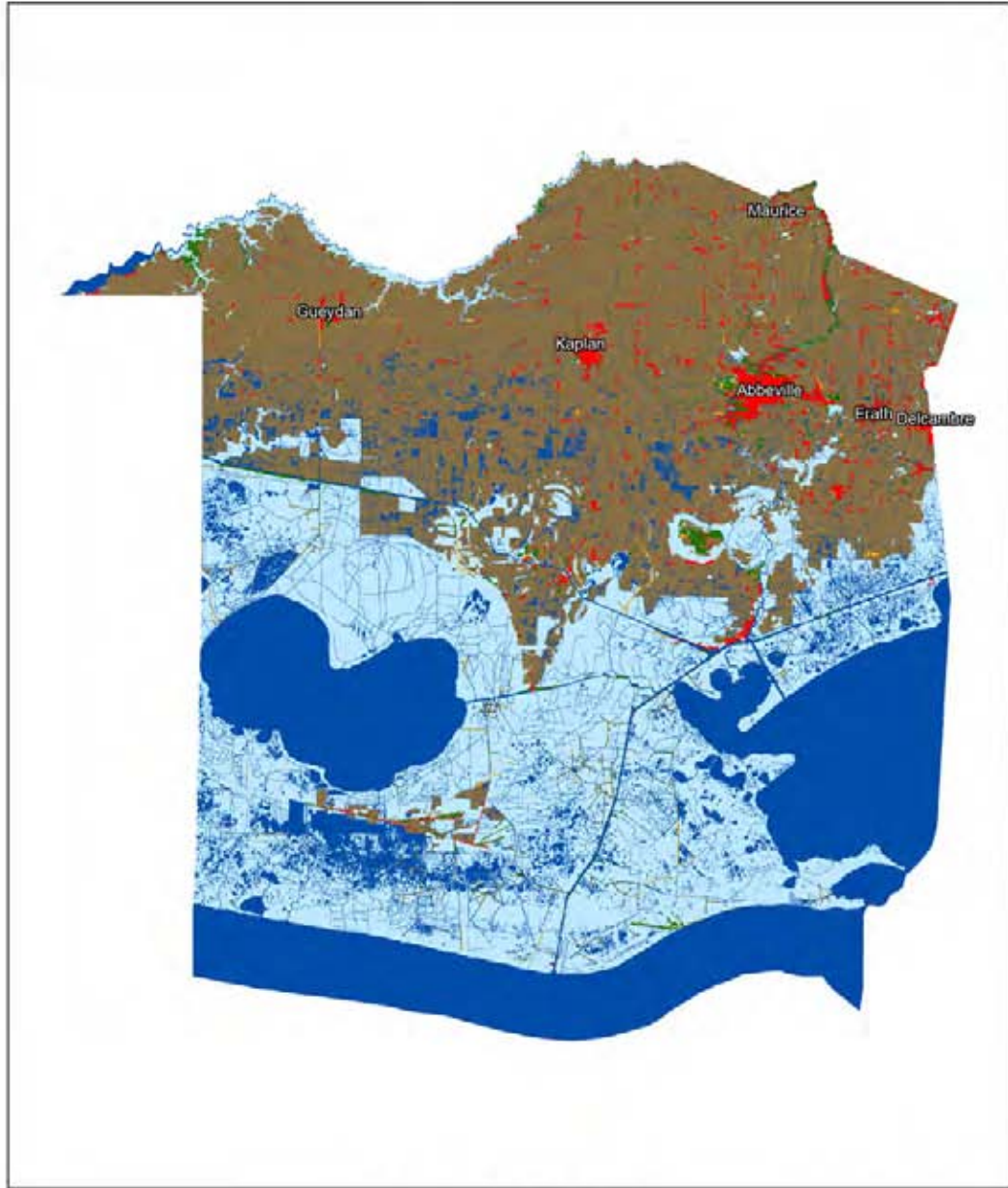
PROJECT NO. 10-10-10-001

Sellers & Associates, Inc.
ENGINEERS AND SURVEYORS

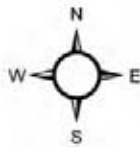
VERMILION, LOUISIANA

Vermilion Parish

USGS Land Cover 1999



1 in = 6 miles

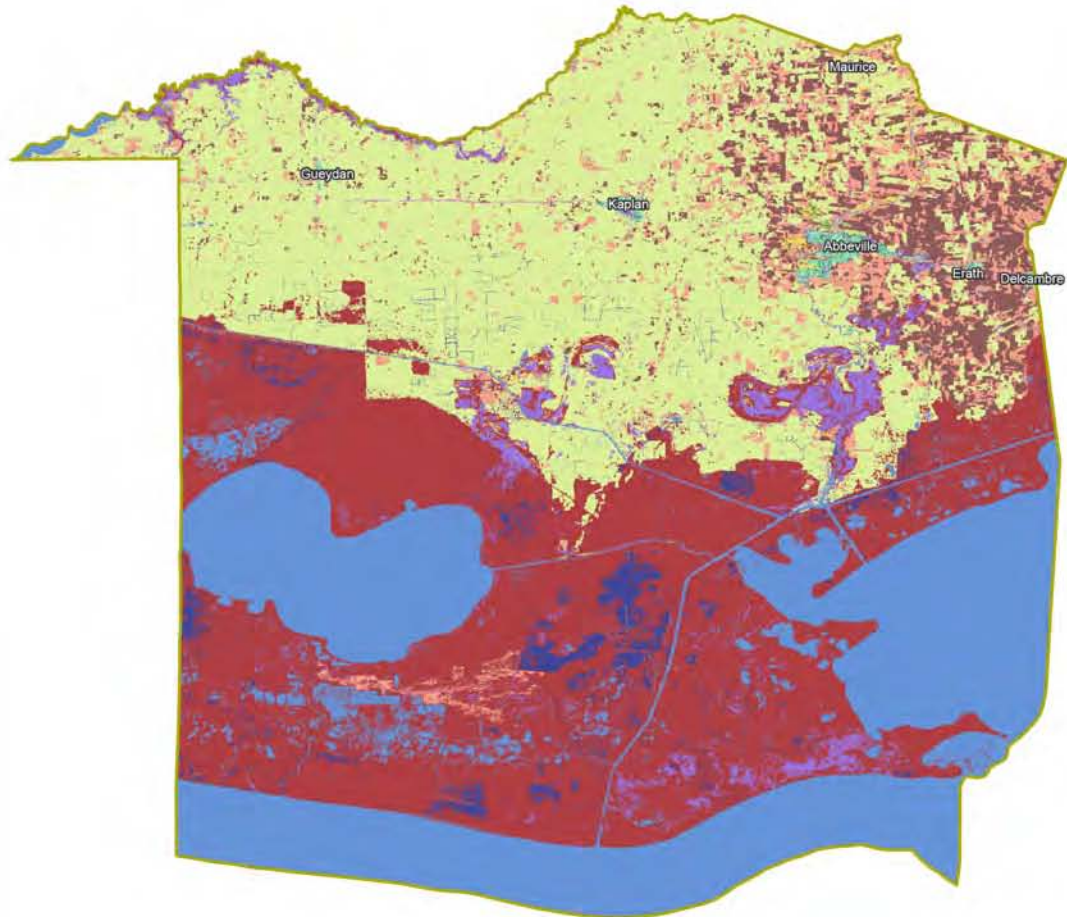
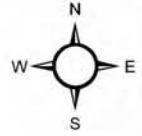


Land Cover Types	
	Urban
	Agricultural Land
	Rangeland
	Forest Land
	Water
	Wetland
	Barren

 **Sellers & Associates, Inc.**
ENGINEERS
Lafayette - Abbeville
SURVEYORS
Louisiana

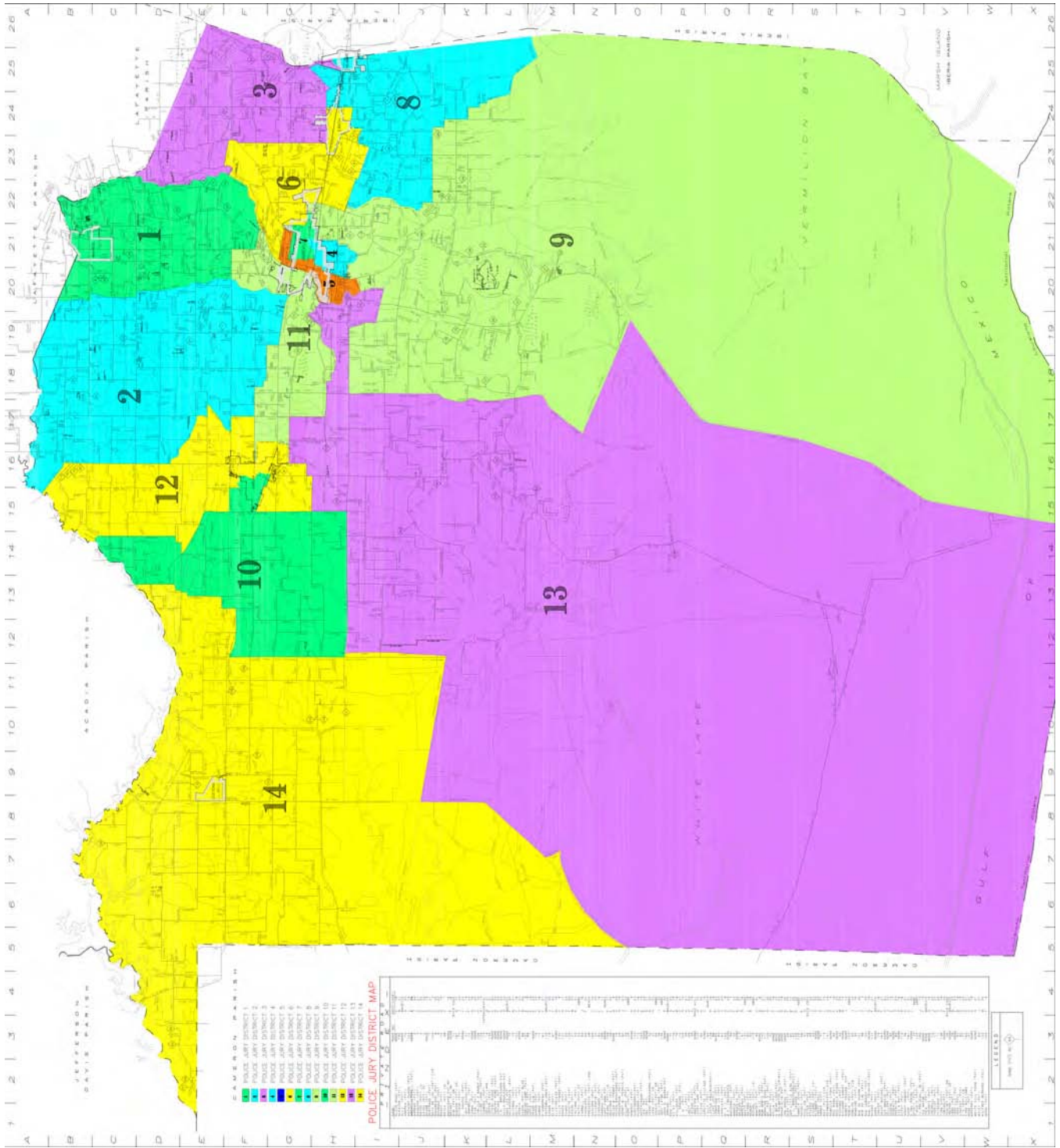
Vermilion Parish

2006 USGS Land Use



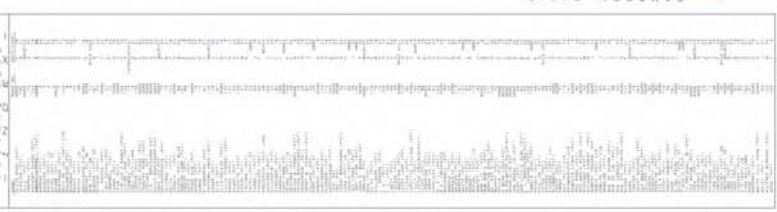
1 in = 6 miles

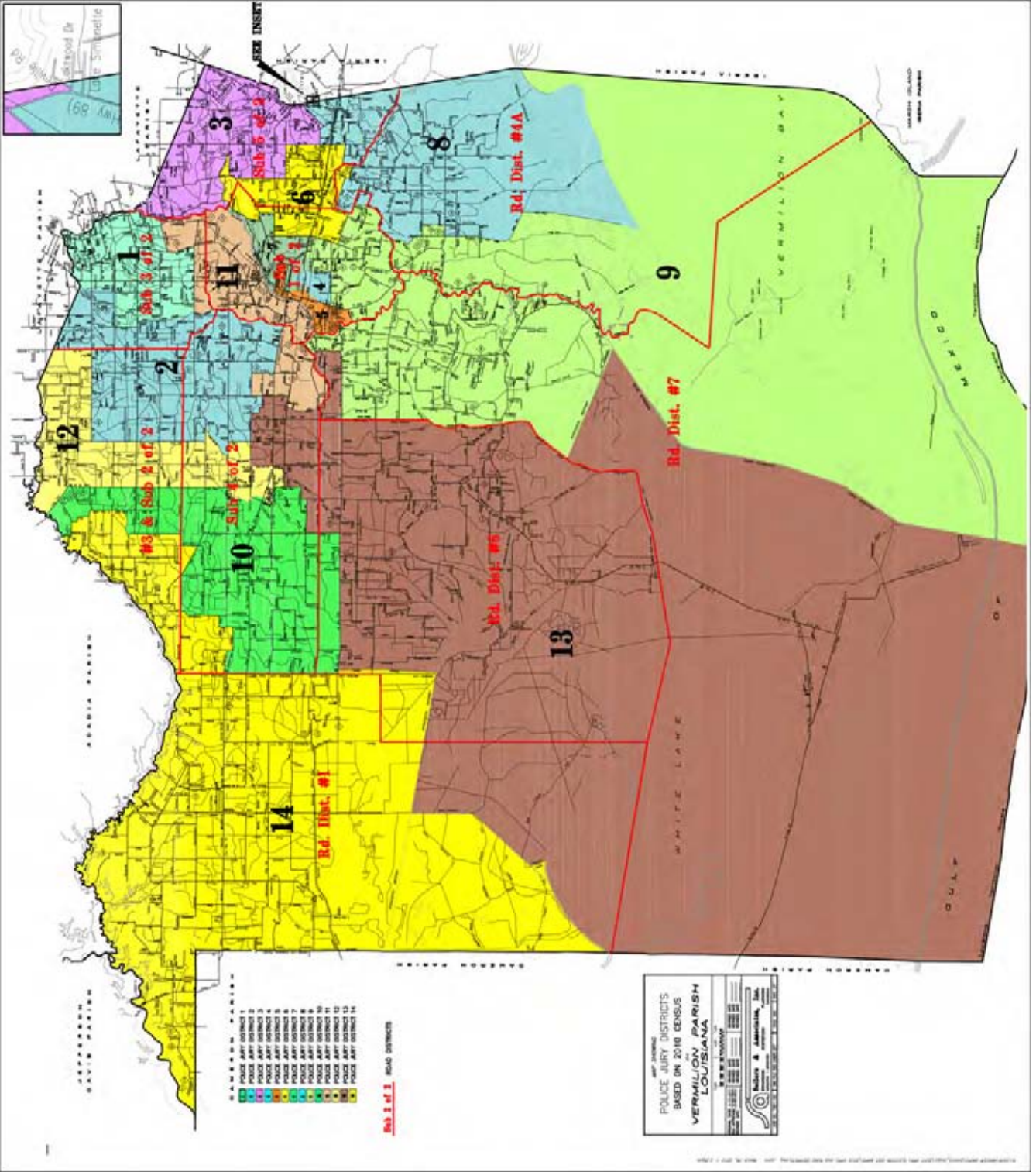
VP_Place10	No Data
Bare Rock/Sand/Clay	Open Water
Commercial/Industrial/Transportation	Pasture/Hay
Deciduous Forest	Quarries/Strip Mines/Gravel Pits
Emergent Herbaceous Wetlands	Row Crops
Evergreen Forest	Small Grains
Grasslands/Herbaceous	Transitional
High Intensity Residential	Urban/Recreational Grasses
Low Intensity Residential	Woody Wetlands
Mixed Forest	

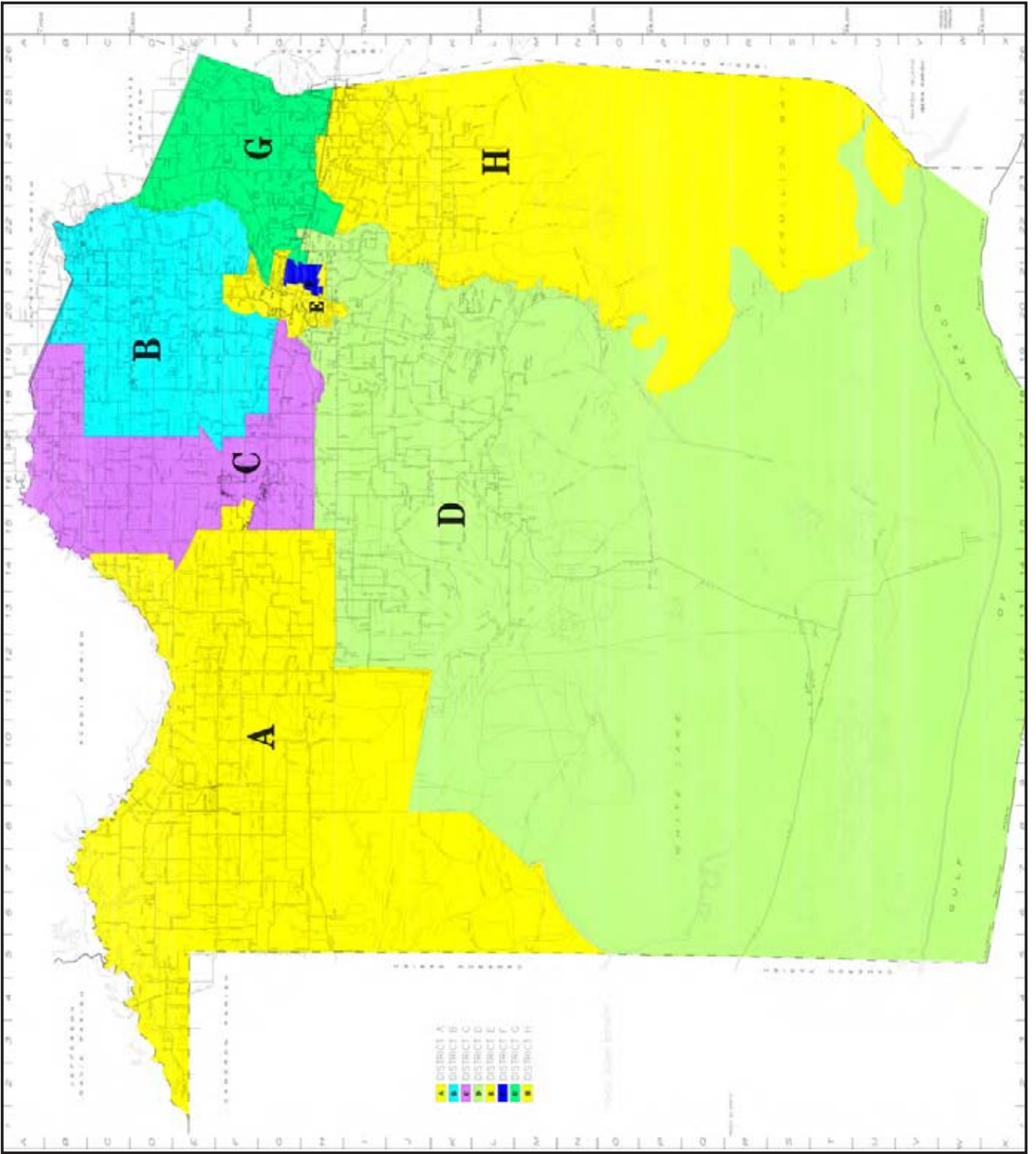


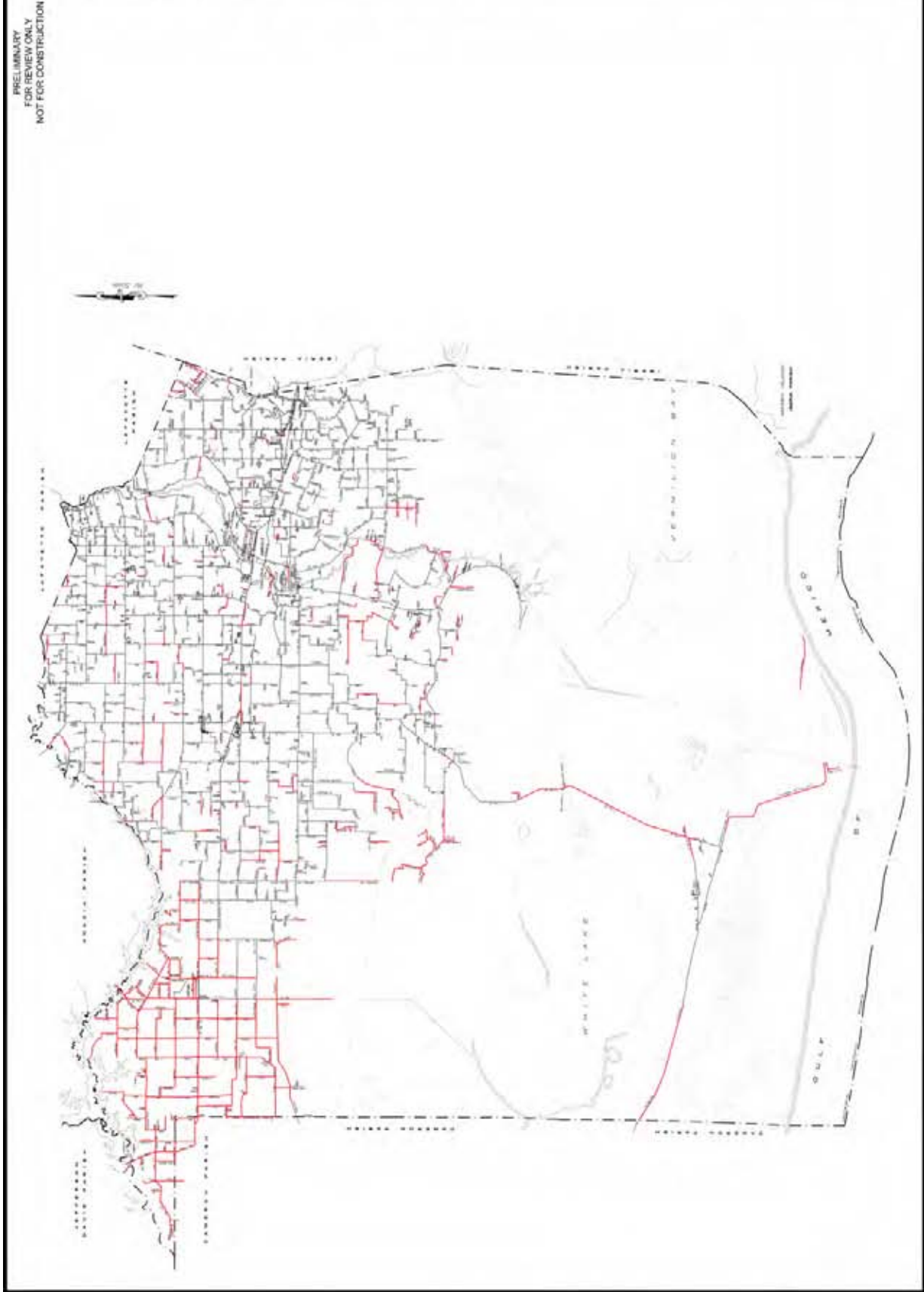
- LEGEND**
- 1 POLICE JURY DISTRICT 1
 - 2 POLICE JURY DISTRICT 2
 - 3 POLICE JURY DISTRICT 3
 - 4 POLICE JURY DISTRICT 4
 - 5 POLICE JURY DISTRICT 5
 - 6 POLICE JURY DISTRICT 6
 - 7 POLICE JURY DISTRICT 7
 - 8 POLICE JURY DISTRICT 8
 - 9 POLICE JURY DISTRICT 9
 - 10 POLICE JURY DISTRICT 10
 - 11 POLICE JURY DISTRICT 11
 - 12 POLICE JURY DISTRICT 12
 - 13 POLICE JURY DISTRICT 13
 - 14 POLICE JURY DISTRICT 14

POLICE JURY DISTRICT MAP









PRELIMINARY
FOR REVIEW ONLY
NOT FOR CONSTRUCTION

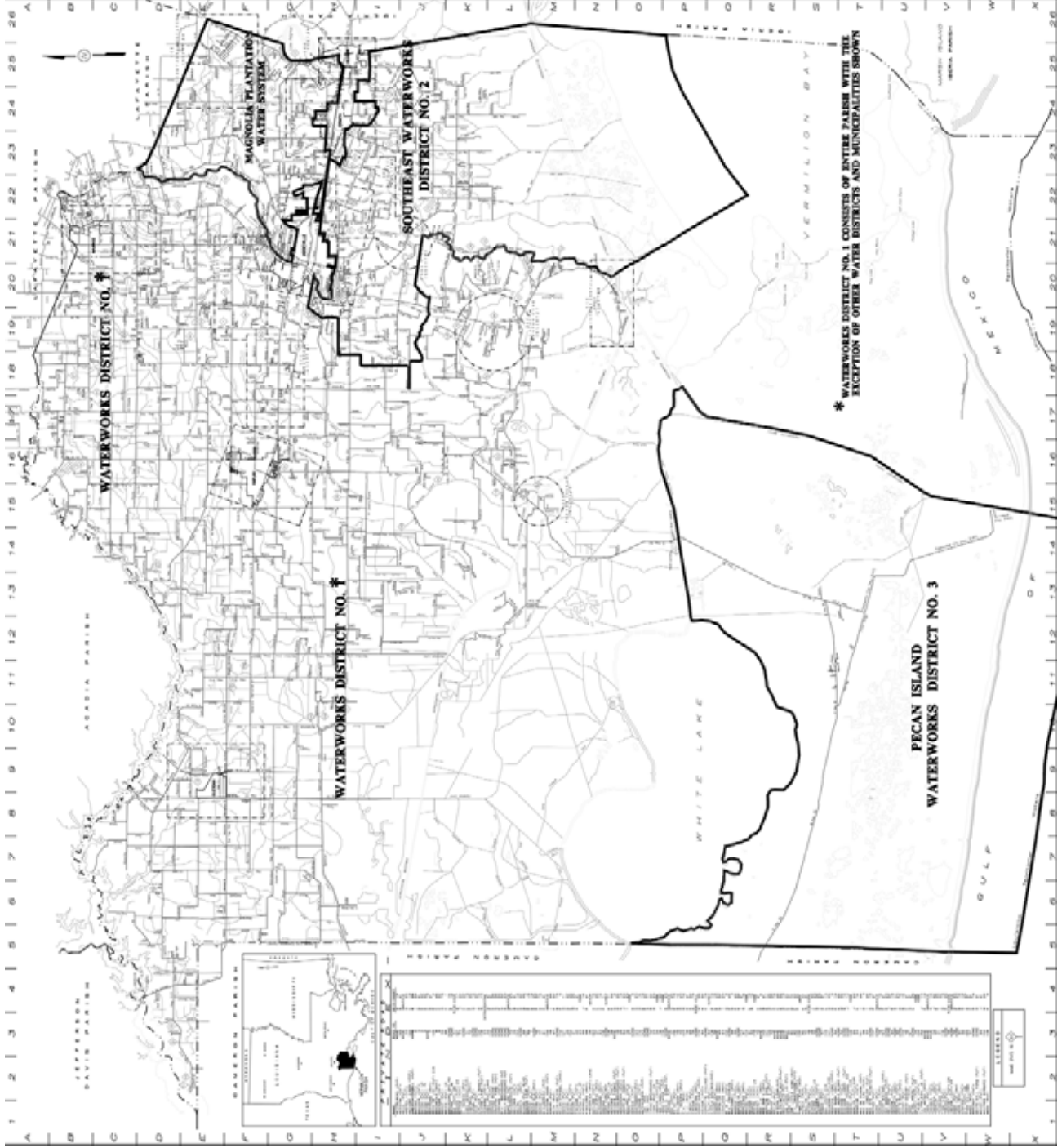
THIS DOCUMENT IS NOT
FOR CONSTRUCTION
CONTRACT DOCUMENT
OR FOR CONSTRUCTION
ON A PROJECT OF THE
STATE OF LOUISIANA
LAWRENCE H. 17963

NO.	DATE	REVISIONS

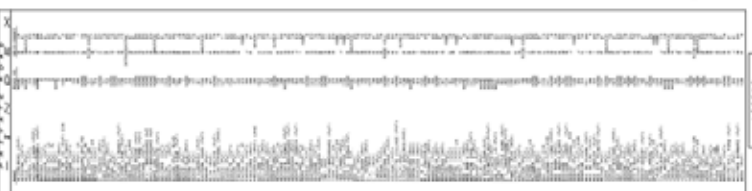
Sellers & Associates, Inc.
 1000 PINE STREET, SUITE 1000
 MONROE, LOUISIANA 70132
 (504) 233-1111
SHEET DESCRIPTION
 INDEX MAP

**MAP SHOWING
ROADS WITH NO WATER LINES
IN
VERMILION PARISH, LOUISIANA**

ENGINEER	J.A. LITTLE
DRAWN BY	J.A. LITTLE
CHECKED BY	J.A. LITTLE
DATE	08/11/11
SCALE	AS SHOWN
PROJECT NO.	11-001
FILE	11-001
SHEET	1
OF	1 SHEETS



* WATERWORKS DISTRICT NO. 1 CONSISTS OF ENTIRE PARISH WITH THE EXCEPTION OF OTHER WATER DISTRICTS AND MUNICIPALITIES BROWN



Vermilion Parish

COMPREHENSIVE RESILIENCY PLAN

Building safer, stronger and more resilient physical and human systems so that communities are better able to withstand future disasters.



The *Vermilion Parish Comprehensive Resiliency Plan* is made possible through a grant provided through the State of Louisiana Office of Community Development (OCD) – Disaster Recovery Unit (DRU) from the U.S. Department of Housing and Urban Development (HUD).

SIDES
& ASSOCIATES

ATCS[®]
ENGINEERING • PLANNING • SURVIVING

Sellers & Associates, Inc.