



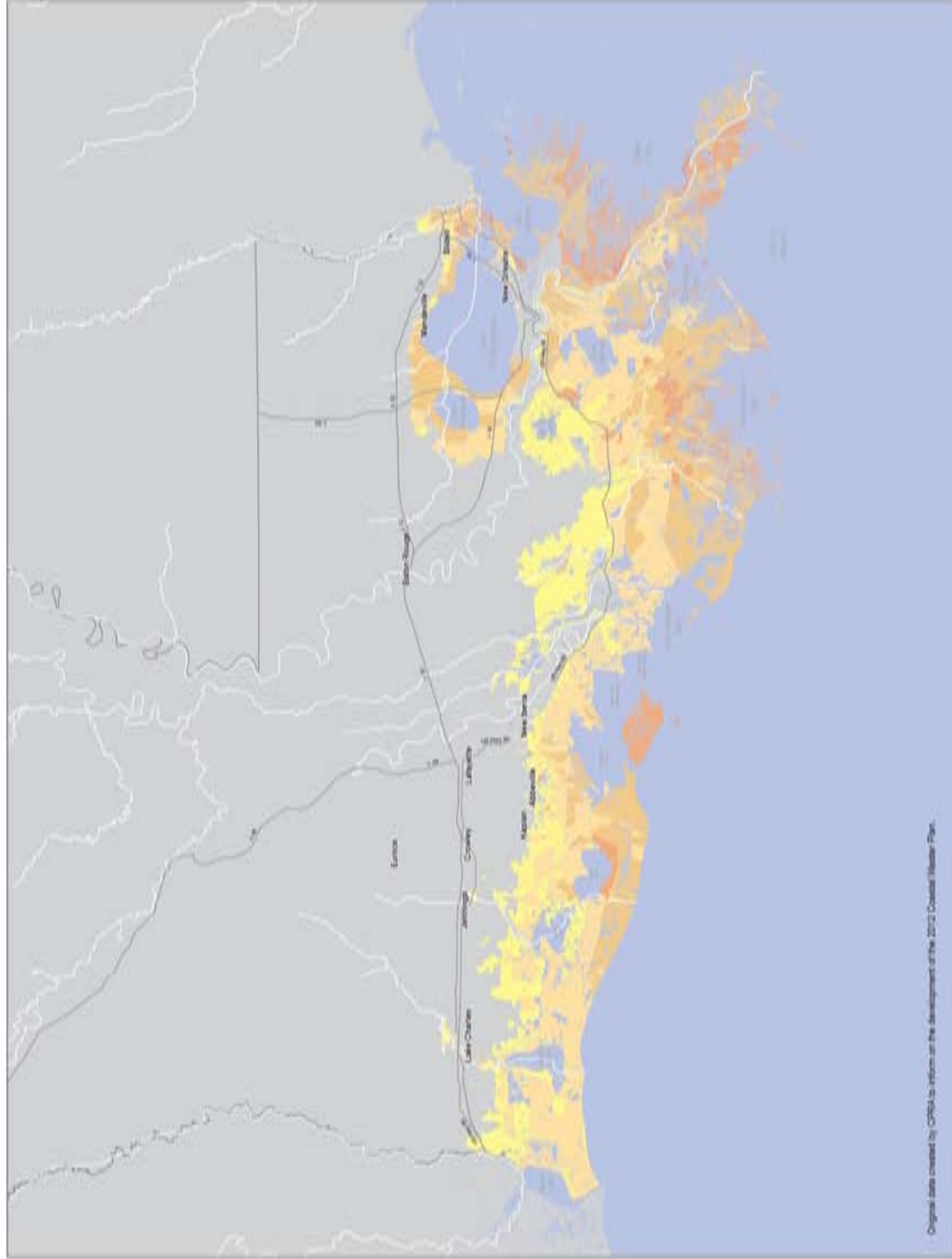
**NewData
Maps**

Predicted Flooding

100 Year Flood
50 Years From Now

Legend

- 0.5 to 5.0 Feet
- 5.0 to 10.0 Feet
- 10.0 to 15.0 Feet
- 15.0 to 20.0 Feet
- 20.0 to 25.0 Feet



Original data created by CRRMA in support of the development of the 2010 Coastal Master Plan.

1 inch = 70,000 feet



Census 2000



Census 2010



Population Density

by Census Block

Data was normalized by dividing Total Population by Block Area in square miles and further classified by using the Quantile classification method in ArcGIS.



1 inch = 21,000 feet

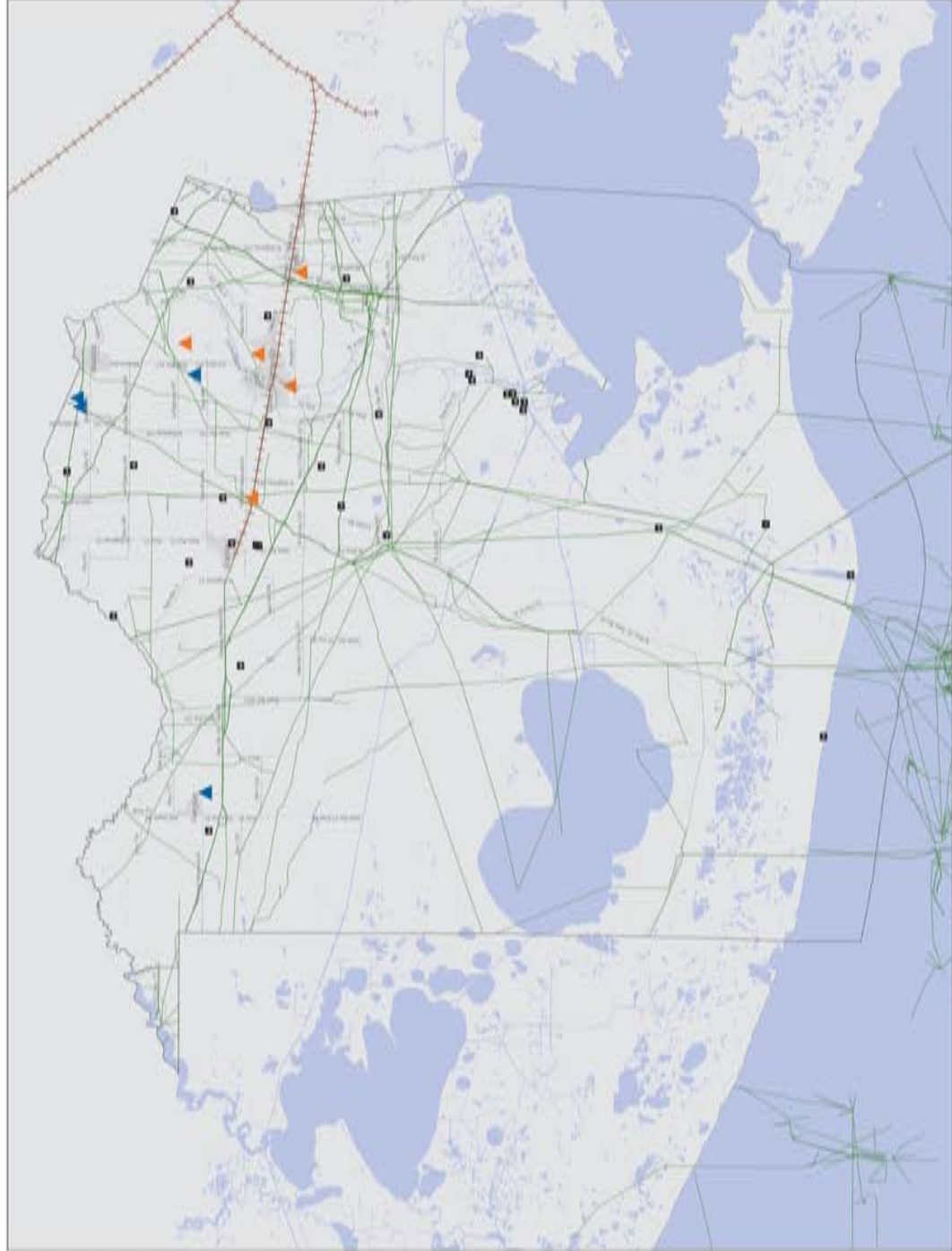
Critical Areas

Vermilion Parish, LA

02/14/2013

Legend

- Pipelines
- Railroads
- Airports
- Active Landfill
- Abandoned Landfill



1 inch = 14,000 feet

Future Land Use

by Census Blocks

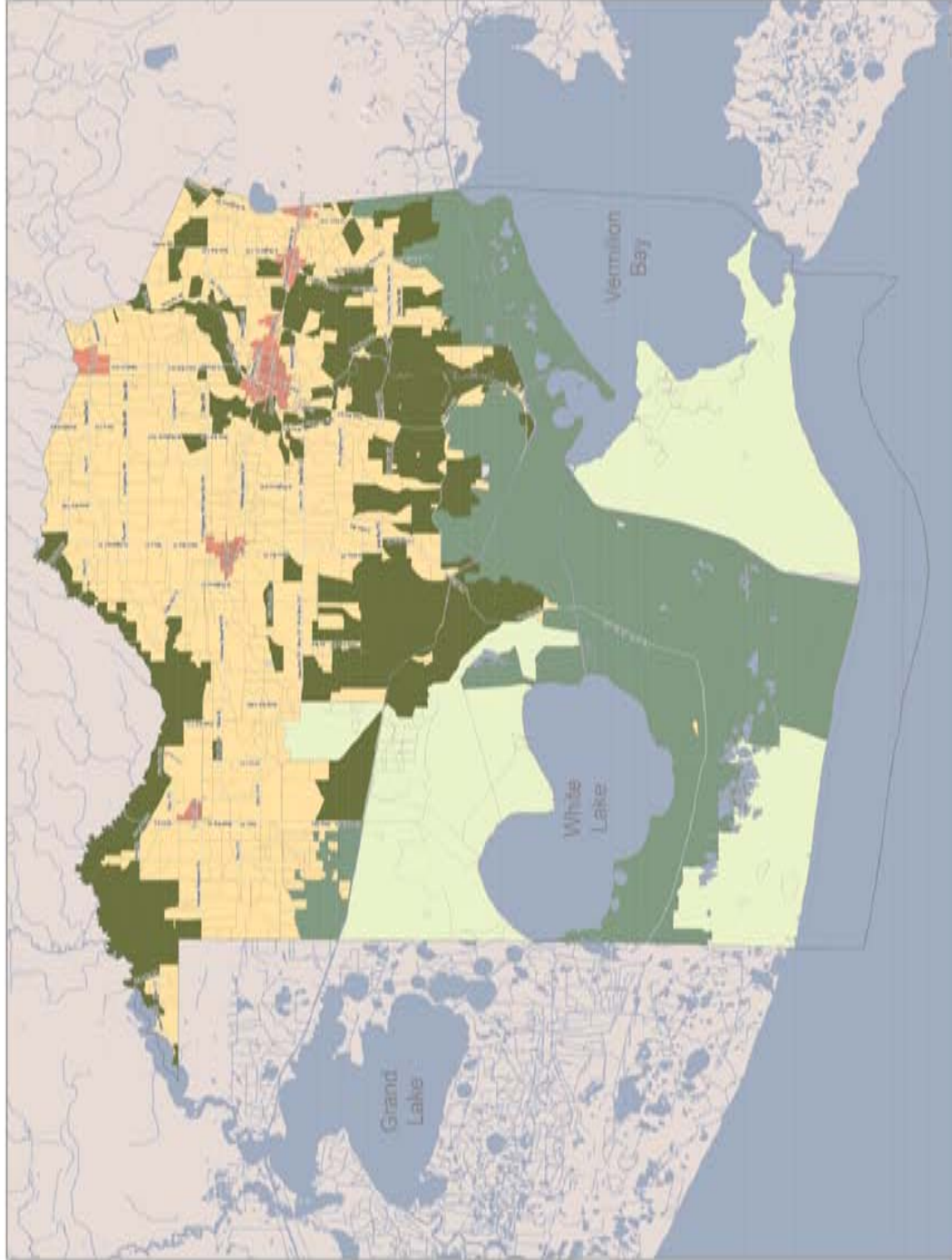
02/26/2013

Legend

- Residential/Commercial
- Agriculture/Uplands
- Forested Wetlands
- Wetlands
- Parks/Open Spaces



Vermilion Parish
COMPREHENSIVE RESILIENCY PLAN



1 inch = 14,000 feet

Abbeville, LA

Historic Districts

02/14/2013

Legend



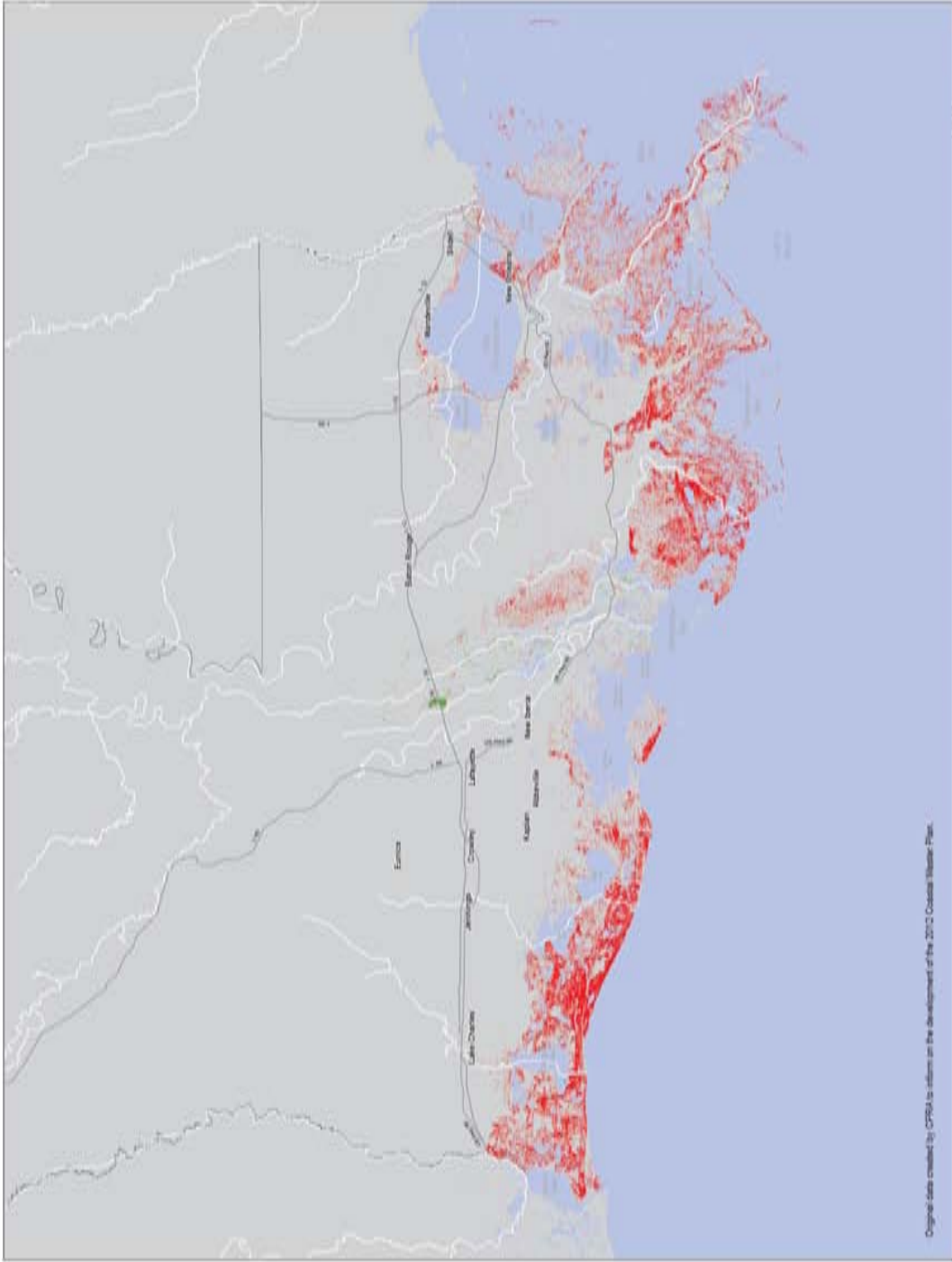
Residential Historic District



Historical Preservation District



1 inch = 300 feet



1 inch = 70,000 feet



Coastal Land Change

Over Next 50 Years

Land Change

- Land Loss
- Land Gain



Coastal Land Change

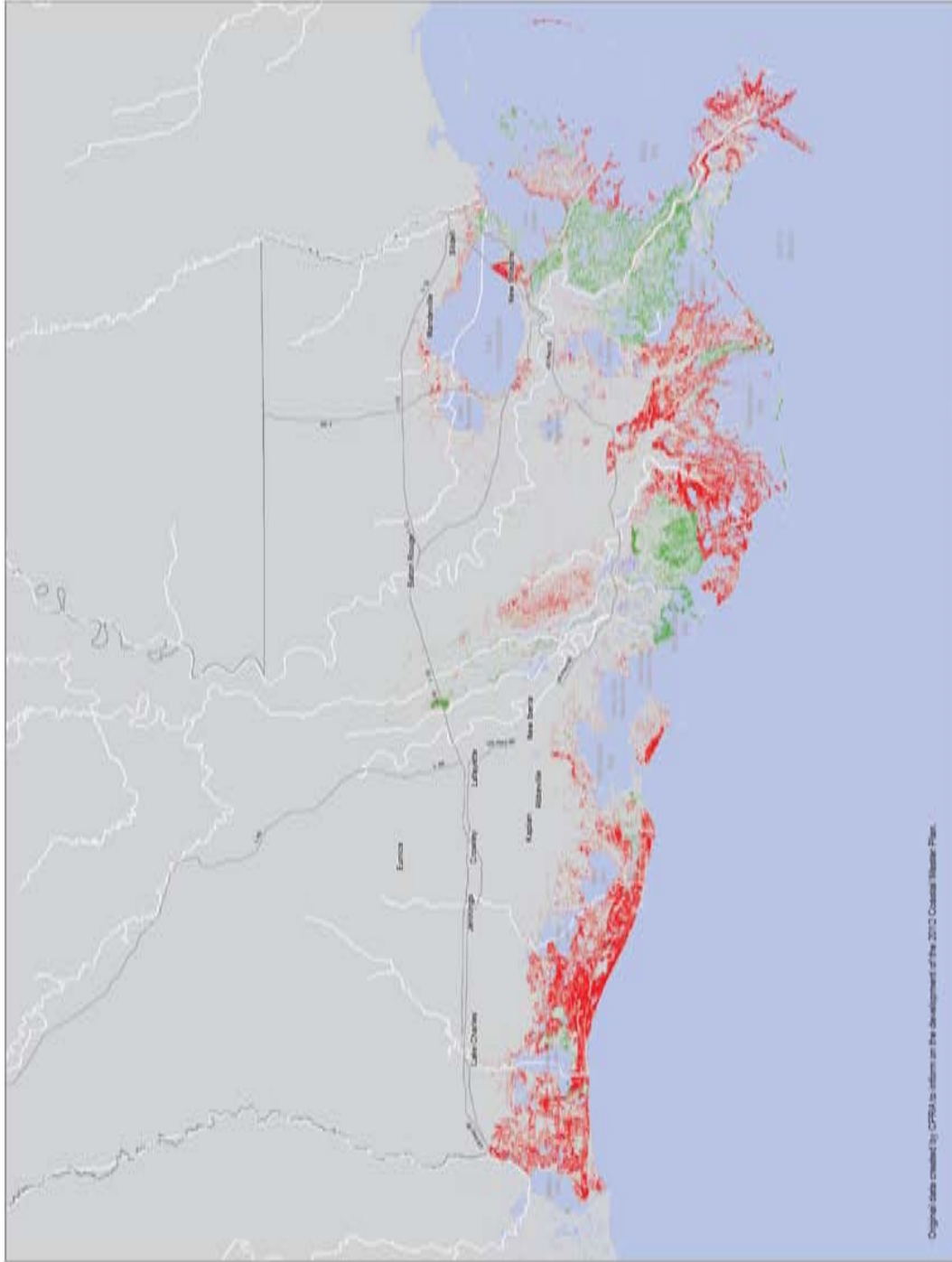
over Next 50 Years
with Projects Implemented

02/14/2013

Legend

Land Loss

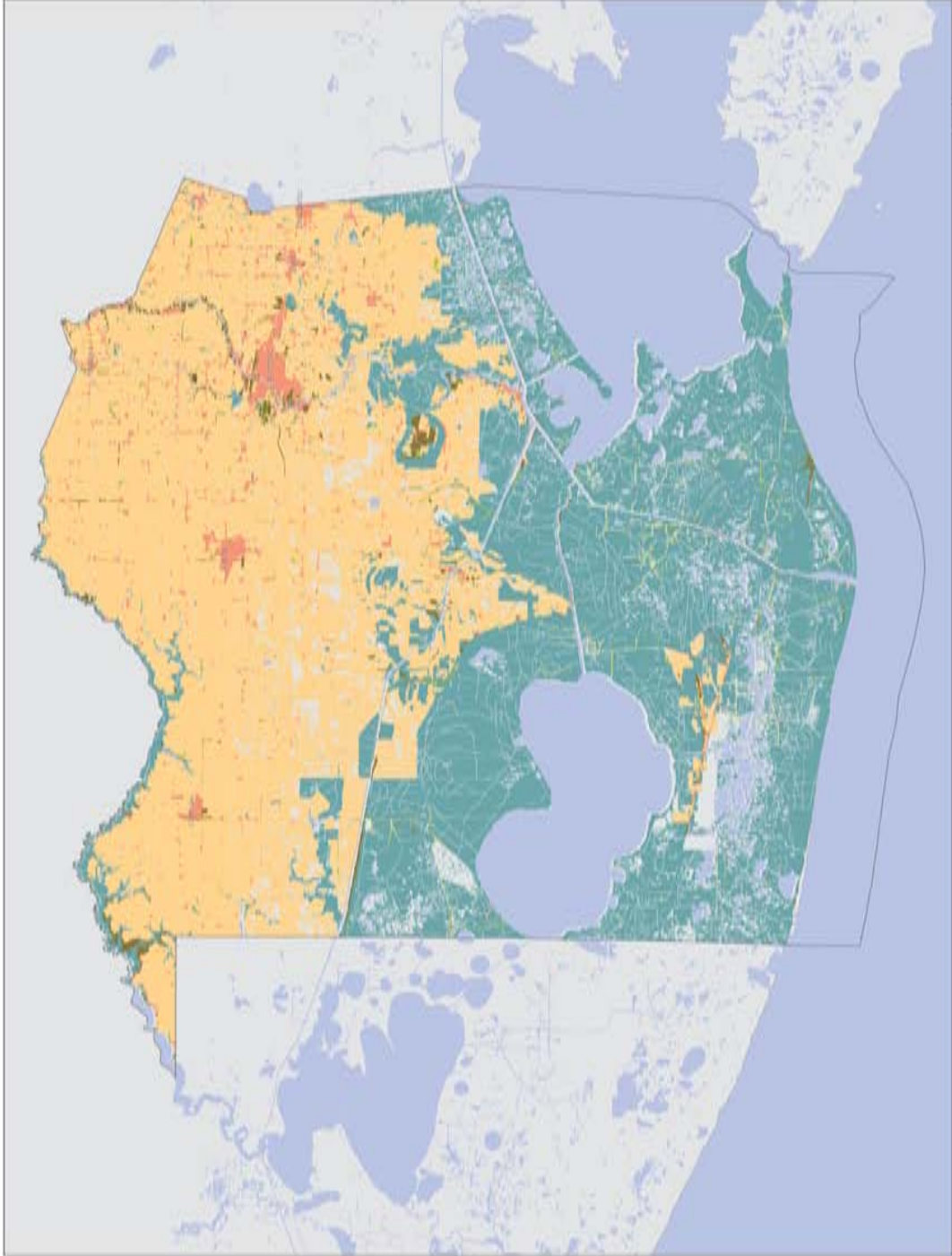
Land Gain



Original data created by CTRSA to inform the development of the 2010 Coastal Master Plan.

1 inch = 70,000 feet





Drawn by S. Polkerson

REPRODUCED FROM VERMILION PARISH 2008 MAPPING REPORT AND COVER 2008

Land Cover

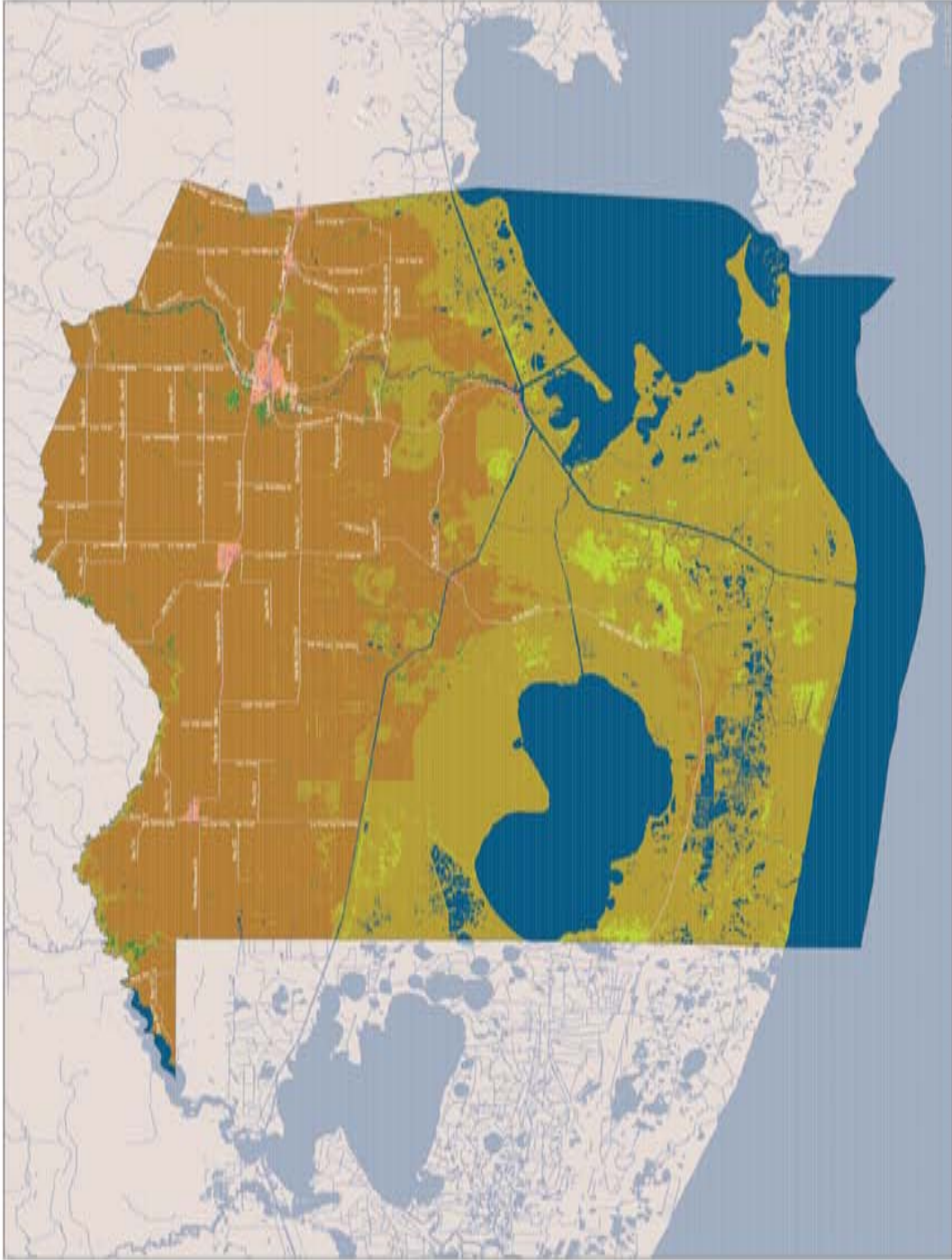
USGS 1999

02/14/2013

Legend

- Agricultural land
- Barren
- Forest land
- Rangeland
- Urban or built-up land
- Wetland





Land Use

USGS 2006

12/10/2012

Legend

Land Types

- Grasses
- Commercial/Industrial
- Forest
- Critical/Sensitive
- Residential
- No Data
- Open Water
- Agriculture



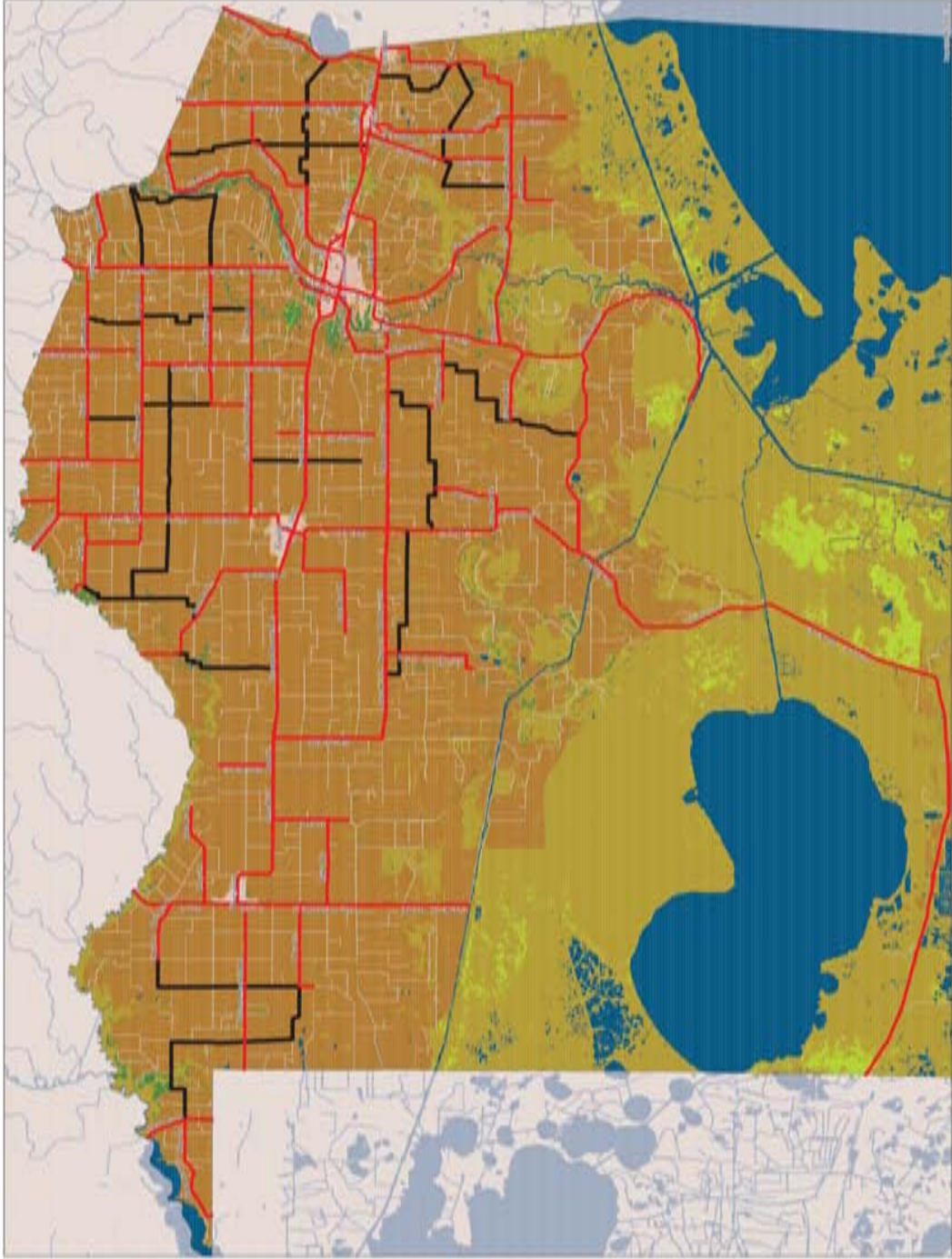
Land Use

Present

12/10/2012

Legend

- Non-Arterial Public Road District
- Arterial District
- Land Types**
- Grasses
- Commercial/Industrial
- Forest
- Critical/Sensitive
- Residential
- No Data
- Open Water
- Agriculture

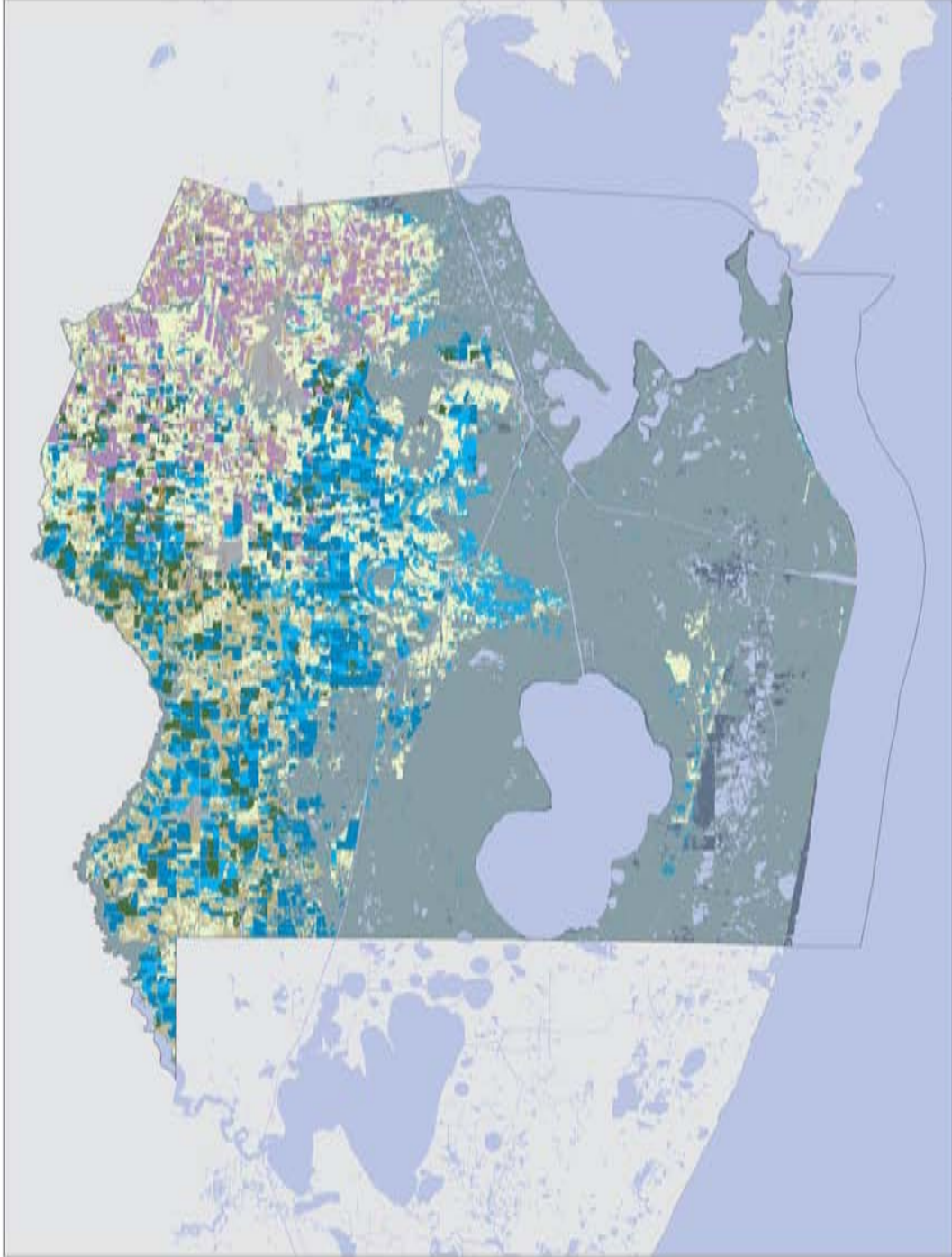
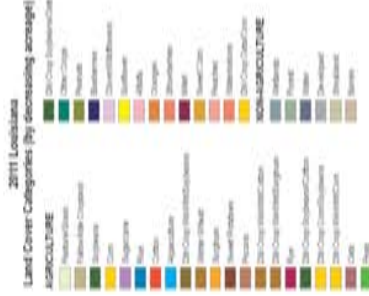


1 inch = 10,000 feet

Land Use

USDA 2011

02/14/2013



1 inch = 14,000 feet

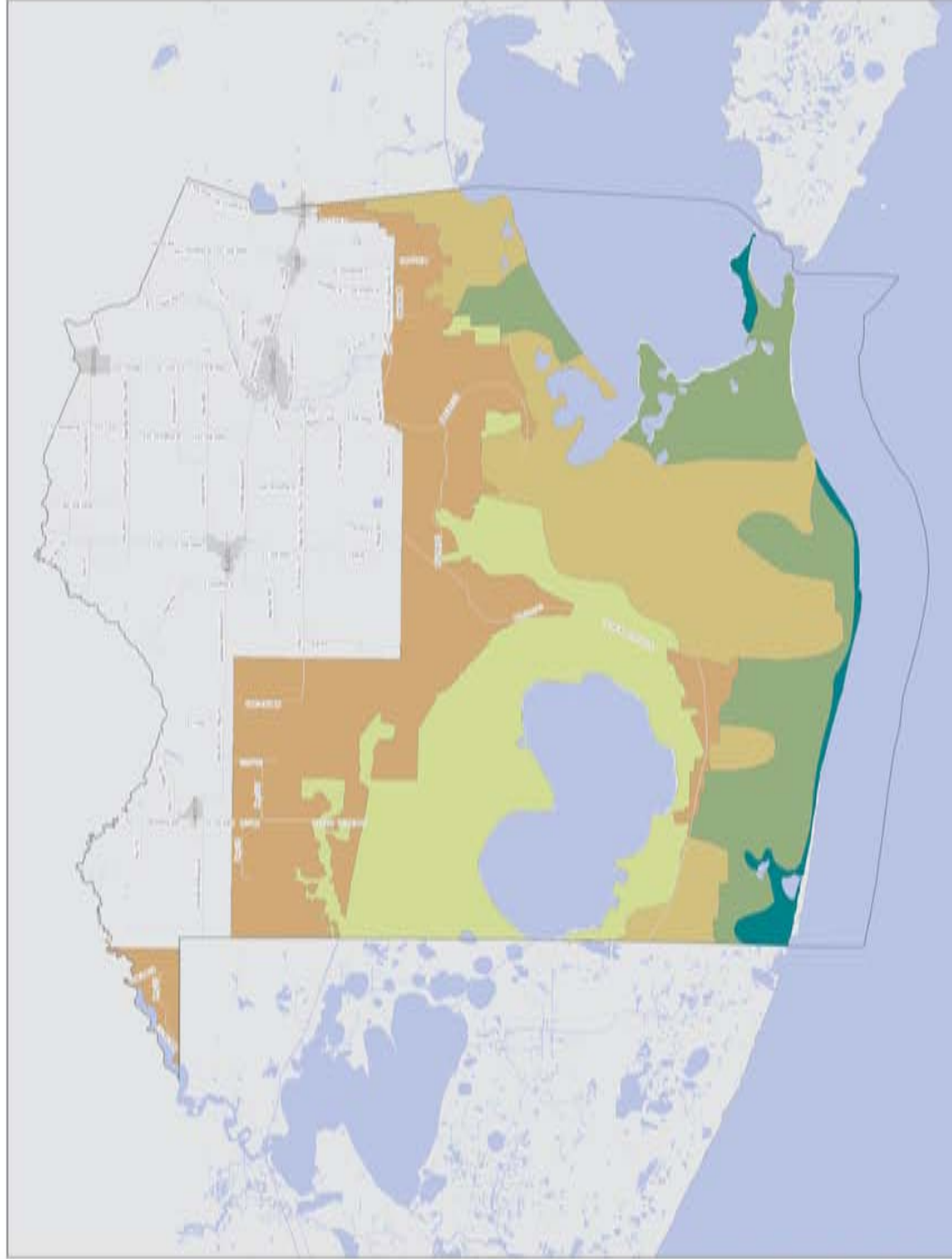
Coastal Marsh Types

USGS/LDWF 2001

02/13/2013

Legend

- Non-Marsh/Other
- Fresh Marsh
- Intermediate Marsh
- Brackish Marsh
- Salt Marsh



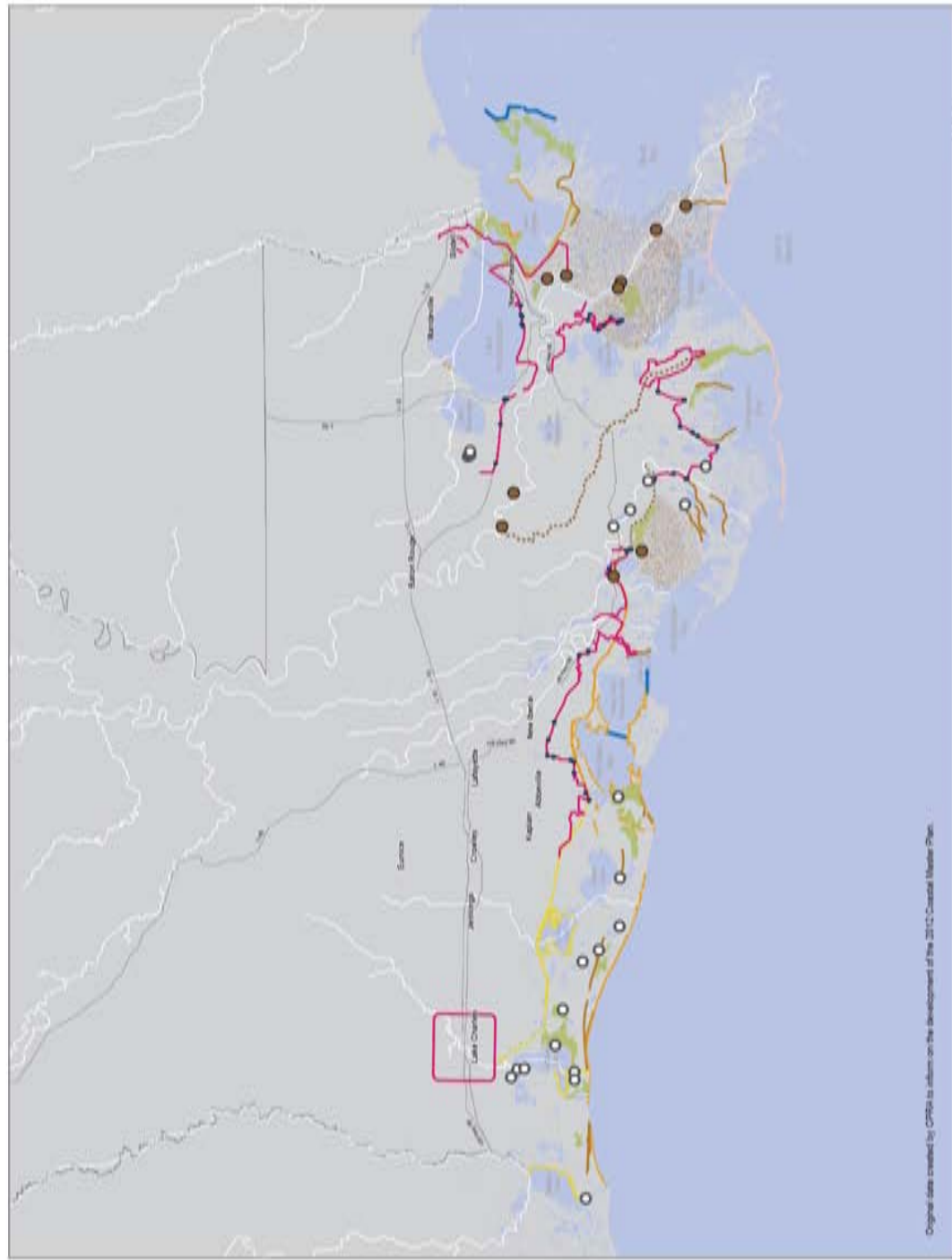
1 inch = 14,000 feet

2012 Coastal Master Plan

Map of Projects

Project Types

- Levee
- Sediment Diversion
- Bank Stabilization
- Barrier Island Restoration
- Oyster Barrier Reef
- Ridge Restoration
- Shoreline Protection
- Sediment Diversion
- Marsh Creation
- Sediment Diversion
- Hydrologic Restoration
- Levee Gate

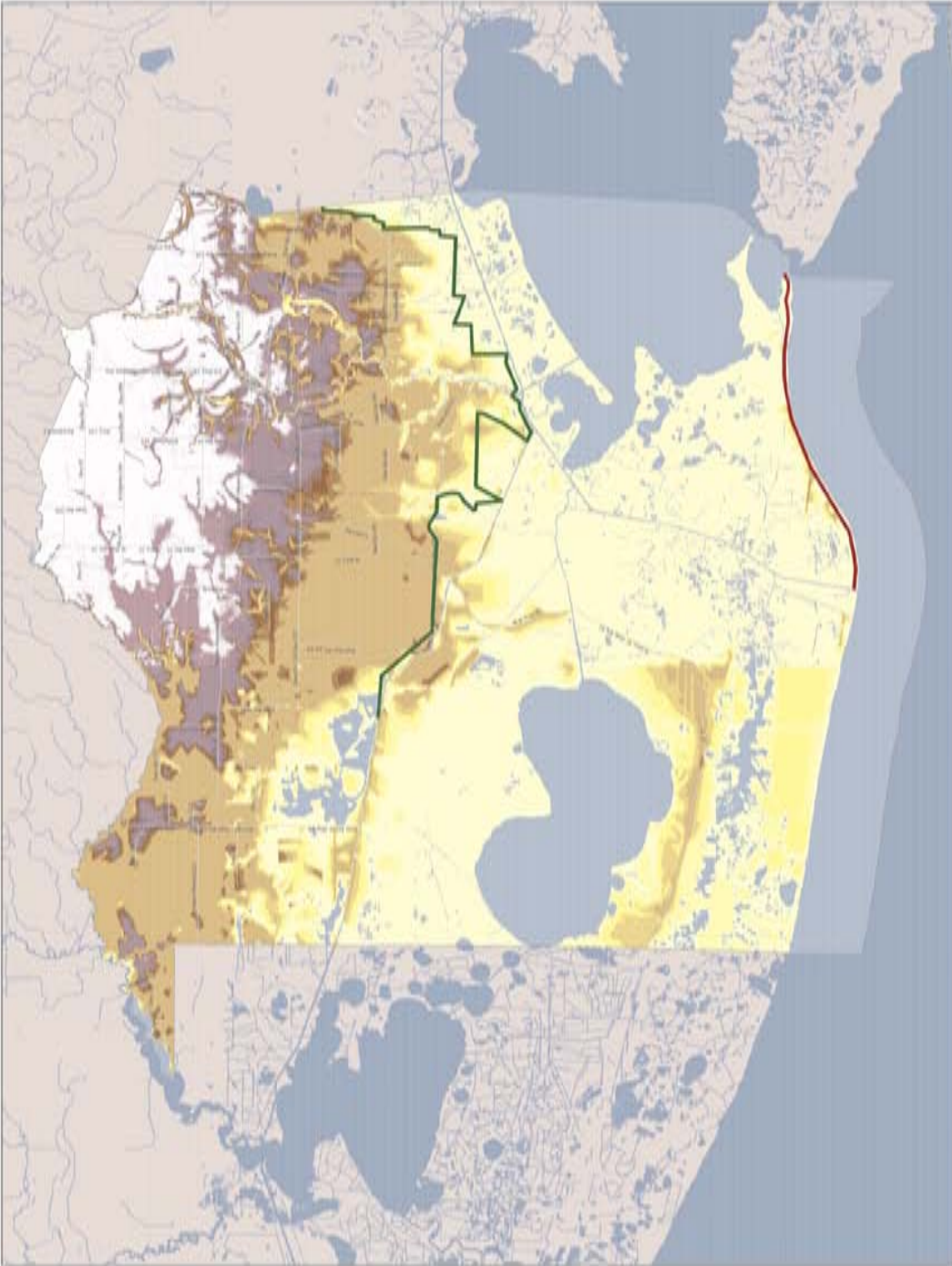


1 inch = 70,000 feet

Original data created by CTRPA in addition to the development of the 2012 Coastal Master Plan.

Draw by S. Prud'homme

REDADESSE AP Sustainable Practices/COASTAL Mapping/Prud'homme /Par. Projec



Proposed Projects

Master Plan

12/10/2012

Legend

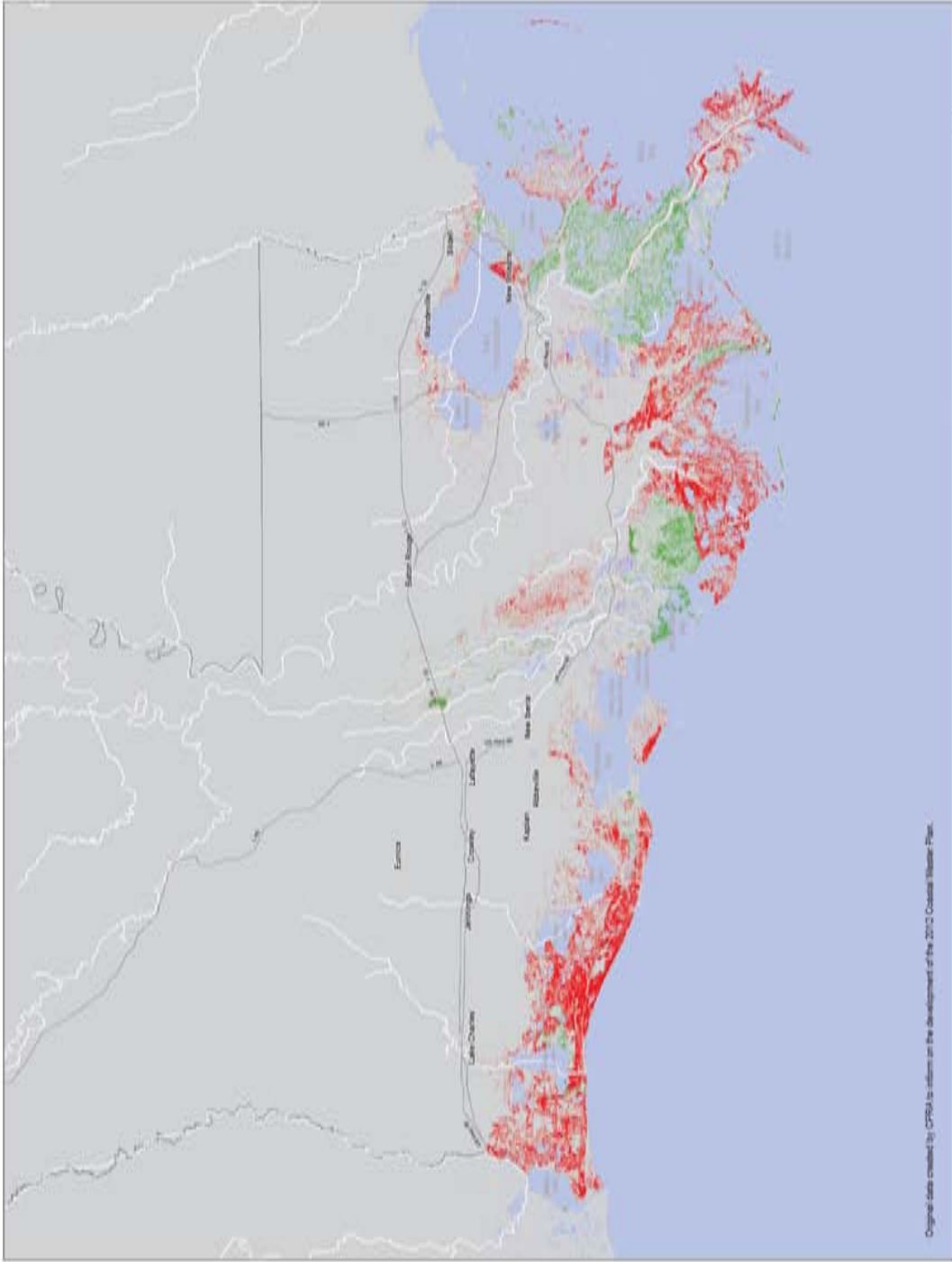
- Shoreline Protection
- Interface Levee

Lidar-DEM

Feet Aby Sea Level



1 inch = 14,000 feet



1 inch = 70,000 feet



Coastal Land Change

over Next 50 Years
with Projects Implemented

02/14/2013

Legend

- Land Loss
- Land Gain

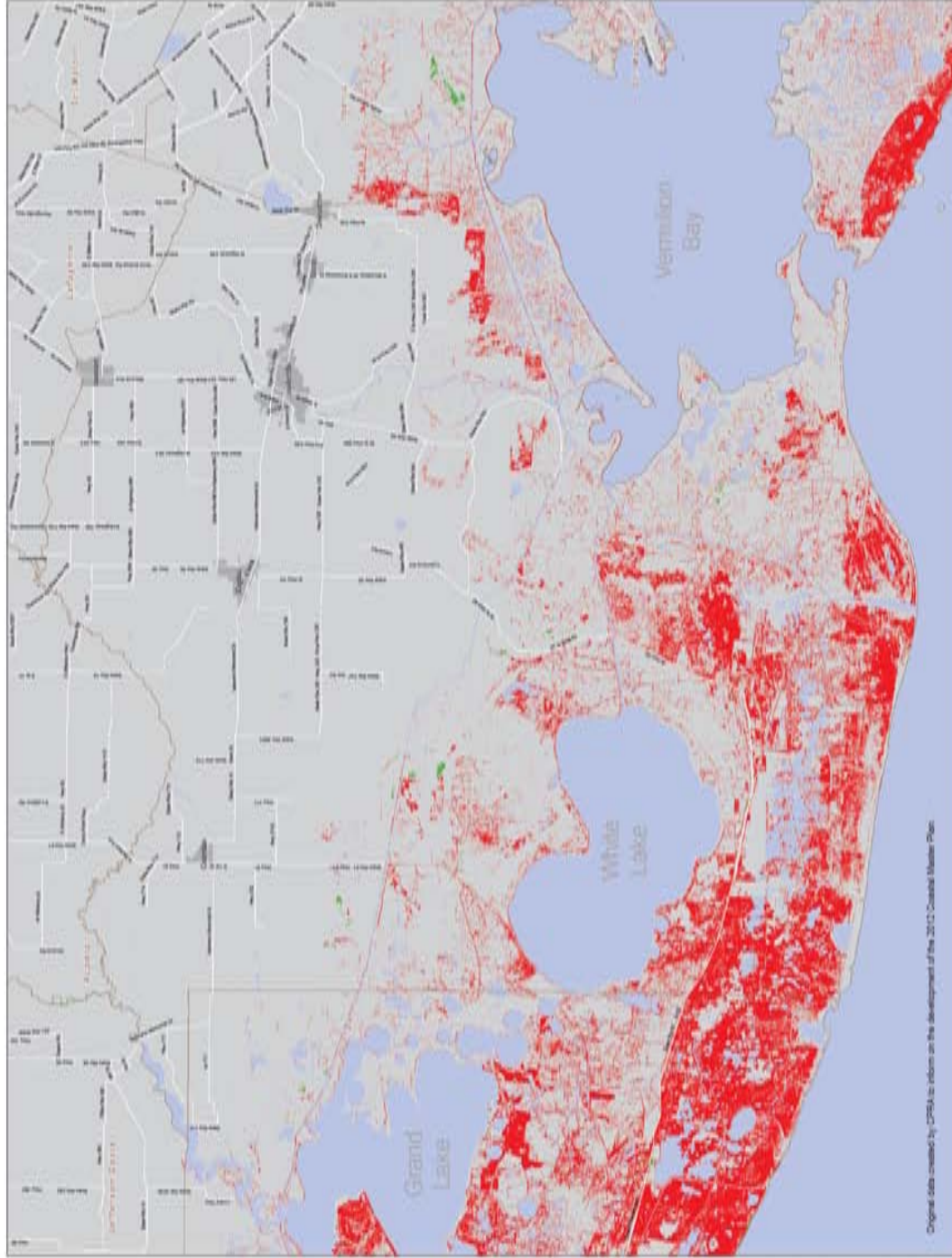


Vermilion Parish Coastal Land Change

Over Next 50 Years
With no Changes

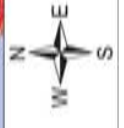
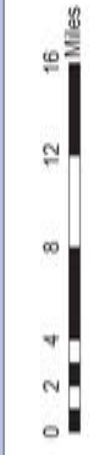
Land Change

- Land Loss
- Land Gain



Original data created by CRRS as input in the development of the 2012 Coastal Master Plan

1 inch = 13,000 feet

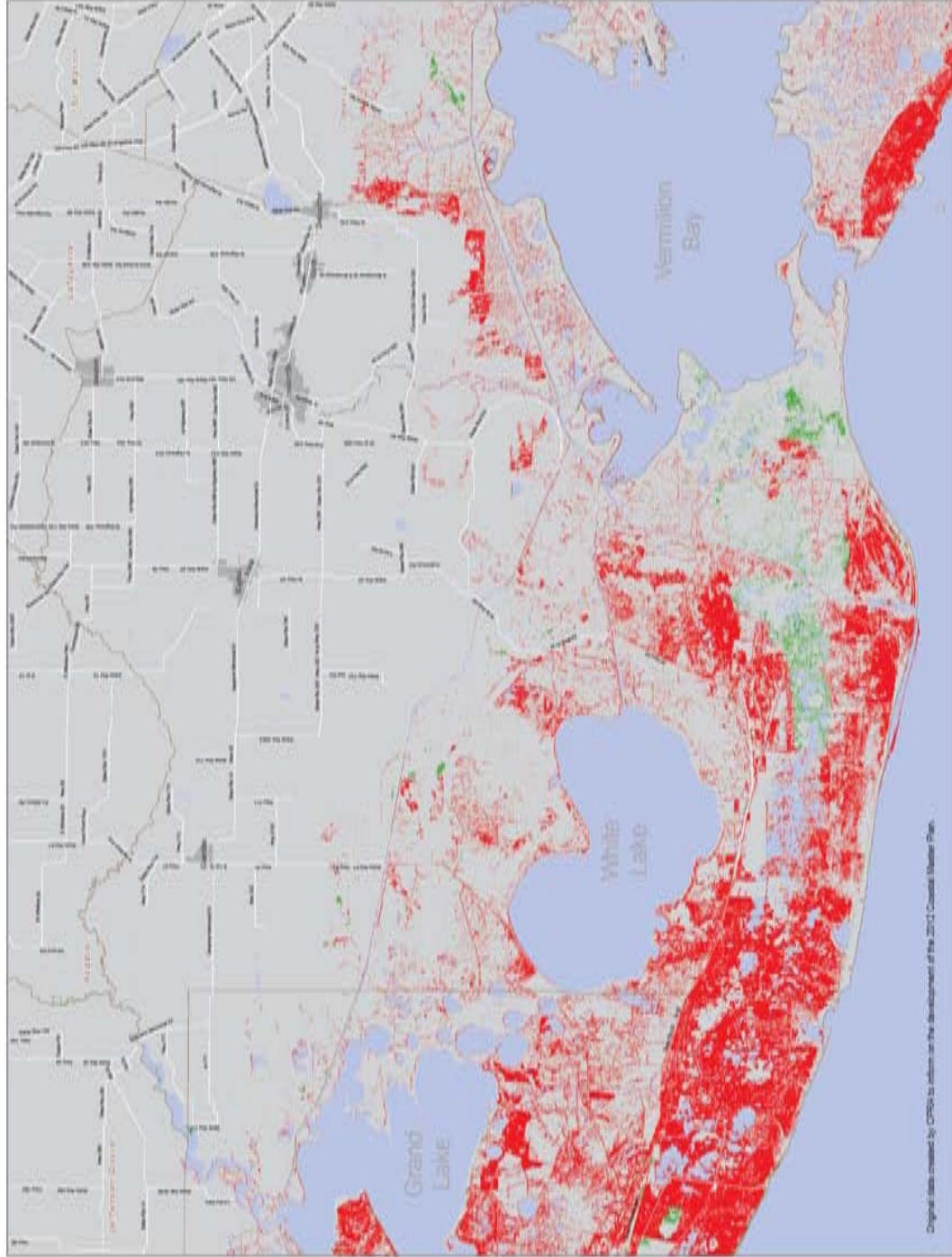


Vermilion Parish Coastal Land Change

Over Next 50 Years With Potential Projects

Land Change

- Land Loss
- Land Gain



Original data created by CTRP in 2011 in the development of the 2011 Coastal Master Plan.



1 inch = 13,000 feet

Vermilion Parish

COMPREHENSIVE RESILIENCY PLAN

Building safer, stronger and more resilient physical and human systems so that communities are better able to withstand future disasters.



The *Vermilion Parish Comprehensive Resiliency Plan* is made possible through a grant provided through the State of Louisiana Office of Community Development (OCD) – Disaster Recovery Unit (DRU) from the U.S. Department of Housing and Urban Development (HUD).

SIDES
& ASSOCIATES

ATCS[®]
ENGINEERING • PLANNING • SURVIVING

Sellers & Associates, Inc.